



LIFT IT

VOLUMIZE CHEEKS

SMOOTH IT

FILL MODERATE TO SEVERE LINES

PLUMP IT

ADD FULLNESS TO LIPS

Actual patient treated with JUVÉDERM VOLUMA[®] XC in the cheek area, JUVÉDERM VOLLURE[™] XC in the nasolabial folds and marionette lines, and JUVÉDERM[®] Ultra XC in the lips for lip augmentation. Results may vary.

**There's a
JUVÉDERM[®]
for THAT**

Please see Indications and Important Safety Information inside.

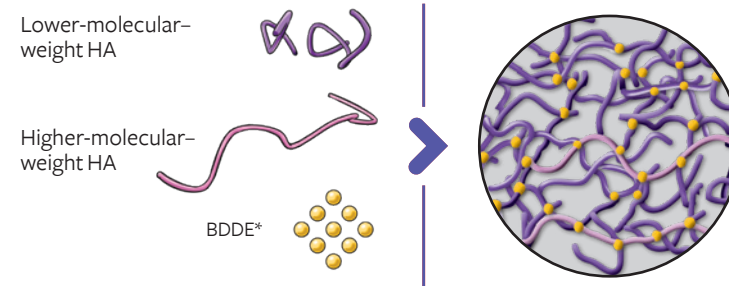
JUVÉDERM® COLLECTION OF FILLERS

5 distinct formulations.
2 innovative technologies.
1 leading collection.^{1,2}

JUVÉDERM® is backed by advanced science to bring you and your patients distinct options from the #1 dermal filler collection.^{1,2}

VYCROSS® TECHNOLOGY

Blends different molecular weights (short and long chains) of hyaluronic acid (HA) for tight and efficient cross-linking³

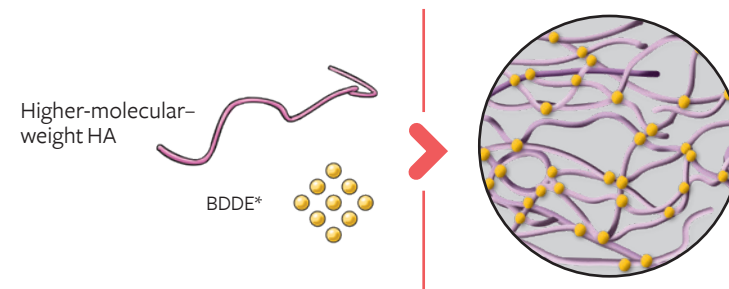


Customized HA concentrations (15 mg/mL–20 mg/mL)³⁻⁶

Tailored gel properties (water affinity, cohesivity, firmness) without compromising duration³⁻⁸

HYLACROSS™ TECHNOLOGY

Cross-linked, higher-molecular-weight (long chains) HA³



Higher HA concentration (24 mg/mL)^{9,10}

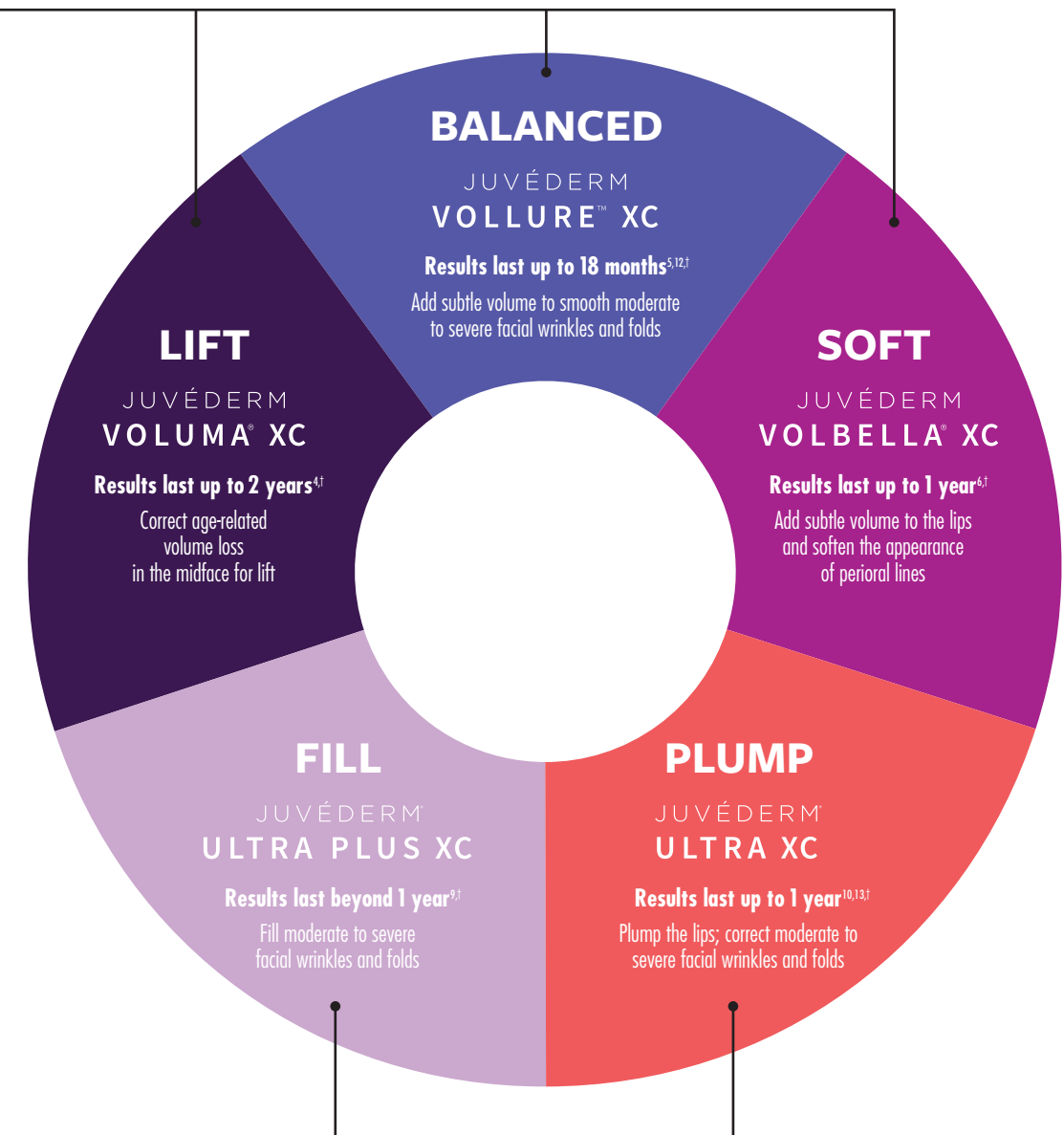
Highly cohesive gels with higher water uptake^{7,8,11}

Gel properties assessed using in vitro studies.^{7,8,11}
Clinical significance of these in vitro data is unknown.

*BDDE prior to reaction; in cross-linking, yellow circles denote fully reacted sites.

ONE COLLECTION

The widest range of fillers on the market—each designed for specific needs^{4-7,9,10}



[†]With optimal treatment.

JUVÉDERM® Collection of Fillers Important Information

INDICATIONS

JUVÉDERM VOLUMA® XC injectable gel is indicated for deep (subcutaneous and/or supraperiosteal) injection for cheek augmentation to correct age-related volume deficit in the mid-face in adults over the age of 21.

JUVÉDERM® Ultra XC and JUVÉDERM® Ultra Plus XC injectable gels are indicated for injection into the mid-to-deep dermis for correction of moderate to severe facial wrinkles and folds (such as nasolabial folds).

JUVÉDERM VOLLURE™ XC injectable gel is indicated for injection into the mid-to-deep dermis for correction of moderate to severe facial wrinkles and folds (such as nasolabial folds) in adults over the age of 21.

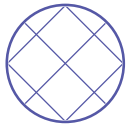



JUVÉDERM® Ultra XC injectable gel is indicated for injection into the lips and perioral area for lip augmentation in adults over the age of 21.

JUVÉDERM VOLBELLA® XC injectable gel is indicated for injection into the lips for lip augmentation and for correction of perioral rhytids in adults over the age of 21.

Please see Important Safety Information on following pages.

DIFFERENT BY DESIGN

A gel's performance is based on how all of its properties work together¹⁴

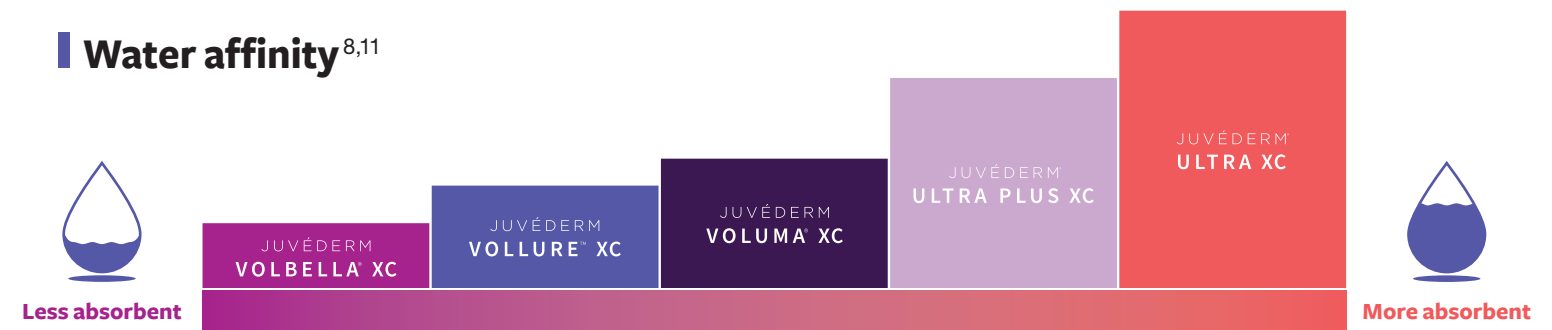
 <p>HA concentration The amount (mg/mL) of hyaluronic acid in the gel^{4-6,9,10,14}</p>	<p>Generally, gels with a higher HA concentration absorb more water, demonstrating more gel swelling in vitro.^{8,11,14,15}</p>
 <p>Water affinity The gel's ability to absorb water^{8,14}</p>	
 <p>G' The firmness of the gel, namely its resistance to deformation^{7,14}</p>	<p>G' and cohesivity contribute to lift capacity.¹⁶</p>
 <p>Cohesivity The gel's tendency to stick together and hold its form or shape under stress¹⁶</p>	

All smooth, yet specifically designed

HA concentration^{4-6,9,10}



Water affinity^{8,11}



G'⁷



Cohesivity⁷



With the JUVÉDERM® Collection, each product has been tailored to offer the widest range of fillers on the market.⁴⁻¹¹

Gel properties assessed using in vitro studies.^{7,8,11}
Clinical significance of these in vitro data is unknown.

IMPORTANT SAFETY INFORMATION

CONTRAINDICATIONS

These products should not be used in patients who have severe allergies, marked by a history of anaphylaxis or history or presence of multiple severe allergies, and should not be used in patients with a history of allergies to Gram-positive bacterial proteins or lidocaine contained in these products.

WARNINGS

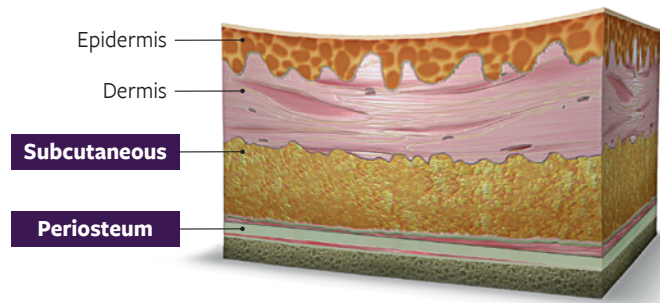
- Do not inject into blood vessels. Introduction of these products into the vasculature may lead to embolization, occlusion of the vessels, ischemia, or infarction. Take extra care when injecting soft-tissue fillers; for example, inject the product slowly and apply the least amount of pressure necessary. Rare, but serious, adverse events associated with the intravascular injection of soft-tissue fillers in the face have been reported and include temporary or permanent vision impairment, blindness, cerebral ischemia or cerebral hemorrhage leading to stroke, skin necrosis, and damage to underlying facial structures. Immediately stop the injection if a patient exhibits any of the following symptoms: changes in vision, signs of a stroke, blanching of the skin, unusual pain during or shortly after the procedure. Patients should receive prompt medical attention and, possibly, evaluation by an appropriate healthcare professional specialist should an intravascular injection occur.

Please see additional Important Safety Information on following pages.

INNOVATION WITH INTENTION

Uniquely designed products for unique patient needs⁴⁻¹¹

MIDFACE (FOR DEEP INJECTION)⁴

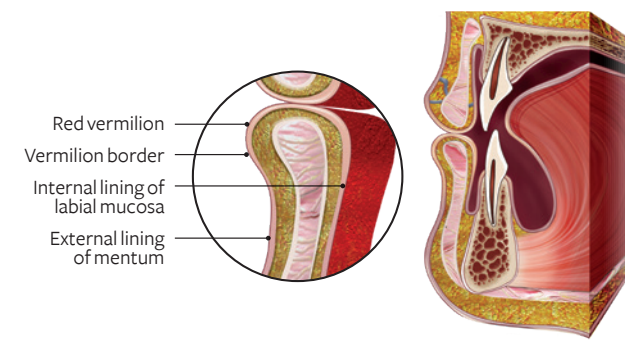


Duration⁴
 Technology^{3,17}
 HA concentration⁴
 Water affinity^{8,11}
 G' (elasticity/firmness)⁷
 Cohesivity⁷

JUVÉDERM VOLUMA XC

Up to 2 years^a
 VYCROSS®
 20 mg/mL
 ● ○ ○ ○
 ● ● ● ●
 ● ● ○ ○

LIPS^{6,10}



Duration^{6,10}
 Technology^{3,18}
 HA concentration^{6,10}
 Water affinity^{8,11}
 G' (elasticity/firmness)⁷
 Cohesivity⁷

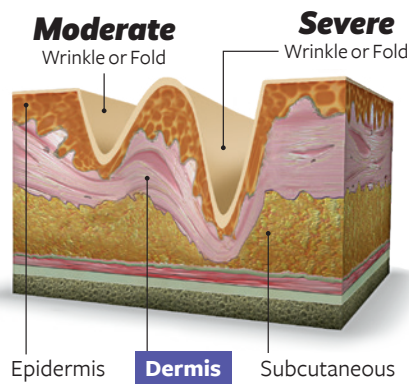
JUVÉDERM VOLBELLA XC

Up to 1 year^a
 VYCROSS®
 15 mg/mL
 ● ○ ○ ○
 ● ● ○ ○
 ● ○ ○ ○

JUVÉDERM ULTRA XC

Up to 1 year^a
 HYLACROSS™
 24 mg/mL
 ● ● ● ●
 ● ○ ○ ○
 ● ● ● ○

LOWER FACE (FOR MID-TO-DEEP DERMAL INJECTION)^{5,9,10}



Duration^{5,9,10,13}
 Technology^{3,12}
 HA concentration^{5,9,10}
 Water affinity^{8,11}
 G' (elasticity/firmness)⁷
 Cohesivity⁷

JUVÉDERM VOLLURE XC

Up to 18 months^a
 VYCROSS®
 17.5 mg/mL
 ● ○ ○ ○
 ● ● ● ●
 ● ○ ○ ○

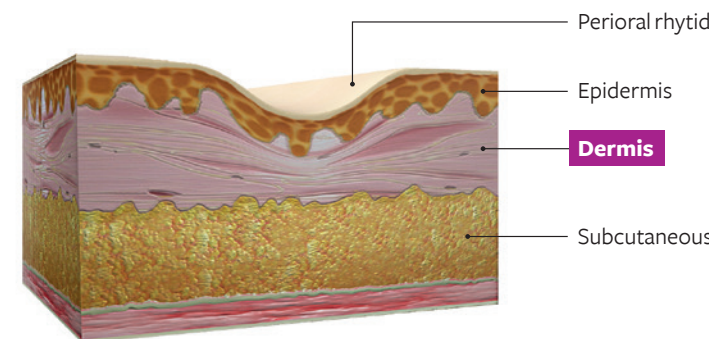
JUVÉDERM ULTRA PLUS XC

Beyond 1 year^a
 HYLACROSS™
 24 mg/mL
 ● ● ● ○
 ● ● ○ ○
 ● ● ● ●

JUVÉDERM ULTRA XC

Up to 1 year^a
 HYLACROSS™
 24 mg/mL
 ● ● ● ●
 ● ○ ○ ○
 ● ● ● ○

PERIORAL LINES (FOR INTRADERMAL INJECTION)⁶



Duration⁶
 Technology^{3,18}
 HA concentration⁶
 Water affinity^{8,11}
 G' (elasticity/firmness)⁷
 Cohesivity⁷

JUVÉDERM VOLBELLA XC

Up to 1 year^a
 VYCROSS®
 15 mg/mL
 ● ○ ○ ○
 ● ● ○ ○
 ● ○ ○ ○

Gel properties assessed using in vitro studies.^{7,8,11}
 Clinical significance of these in vitro data is unknown.

^aWith optimal treatment.

JUVÉDERM®
 COLLECTION OF FILLERS

Gel properties assessed using in vitro studies.^{7,8,11}
 Clinical significance of these in vitro data is unknown.

^aWith optimal treatment.

IMPORTANT SAFETY INFORMATION (continued)

WARNINGS (continued)

- Product use at specific sites in which an active inflammatory process (skin eruptions such as cysts, pimples, rashes, or hives) or infection is present should be deferred until the underlying process has been controlled

Please see additional Important Safety Information on following pages.

A BROAD RANGE OF LONG-LASTING HA FILLERS^{4-6,9,10,13}

JUVÉDERM®
COLLECTION OF FILLERS

COLLECTION

MIDFACE

JUVÉDERM
VOLUMA® XC

Lasts up to 2 years^{4,*}
Correct age-related volume loss
for lift^{4,*}

LOWER FACE

JUVÉDERM
VOLLURE™ XC

Lasts up to 18 months^{5,*}
Add subtle volume to smooth moderate
to severe facial wrinkles and folds^{5,12,*}

JUVÉDERM
ULTRA PLUS XC

Lasts beyond 1 year^{9,*}
Fill moderate to severe facial wrinkles
and folds^{9,*}

JUVÉDERM
ULTRA XC

Lasts up to 1 year^{10,13,*}
Correct moderate to severe facial wrinkles
and folds^{10,*}

LIPS AND PERIORAL LINES

JUVÉDERM
VOLBELLA® XC

Lasts up to 1 year^{6,*}
Add subtle volume to the lips
and soften the appearance of
perioral lines^{6,*}

LIPS

JUVÉDERM
ULTRA XC

Lasts up to 1 year^{10,*}
Add volume to plump the lips^{10,*}

*With optimal treatment.

BECAUSE NO TWO PATIENTS ARE ALIKE, CUSTOMIZE TREATMENTS FOR OPTIMAL RESULTS



Brenda was treated with:

JUVÉDERM
VOLUMA® XC 1.4_{mL}

JUVÉDERM
VOLLURE™ XC 2.9_{mL}

JUVÉDERM
VOLBELLA® XC 2.2_{mL}



BEFORE



AFTER 1 MONTH

Actual patient. Results may vary.

Unretouched photos of paid patient taken before treatment and 1 month after treatment. A total of 1.4 mL of JUVÉDERM VOLUMA® XC was injected into the cheek area. A total of 2.9 mL of JUVÉDERM VOLLURE™ XC was injected into the nasolabial folds and marionette lines. A total of 2.2 mL of JUVÉDERM VOLBELLA® XC was injected into the lips (vermilion body, vermilion border, Cupid's bow, and philtral columns) for lip augmentation, and into the perioral lines.

In the JUVÉDERM VOLUMA® XC clinical trial, the total volume injected ranged from 1.2 mL to 13.9 mL, with a median of 6.6 mL, to achieve optimal correction for all 3 subregions.⁴



Monique was treated with:

JUVÉDERM
ULTRA PLUS XC 2.5_{mL}

JUVÉDERM
ULTRA XC 1.4_{mL}



BEFORE



AFTER 1 MONTH

Actual patient. Results may vary.

Unretouched photos of paid patient taken before treatment and 1 month after treatment. A total of 2.5 mL of JUVÉDERM® Ultra Plus XC was injected into the nasolabial folds and oral commissures. A total of 1.4 mL of JUVÉDERM® Ultra XC was injected into the lips (vermilion body, vermilion border, and philtral columns) for lip augmentation.

BECAUSE NO TWO PATIENTS ARE ALIKE, CUSTOMIZE TREATMENTS FOR OPTIMAL RESULTS



Chanita was treated with:

JUVÉDERM
VOLUMA[®] XC 2.6 mL

JUVÉDERM
ULTRA PLUS XC 3.1 mL

JUVÉDERM
ULTRA XC 0.7 mL

Actual patient. Results may vary.

Unretouched photos of paid patient taken before treatment and 1 month after treatment. A total of 2.6 mL of JUVÉDERM VOLUMA[®] XC was injected into the cheek area. A total of 3.1 mL of JUVÉDERM[®] Ultra Plus XC was injected into the nasolabial folds, oral commissures, and marionette lines. A total of 0.7 mL of JUVÉDERM[®] Ultra XC was injected into the lips (vermilion body, Cupid's bow, and philtral columns) for lip augmentation.

In the JUVÉDERM VOLUMA[®] XC clinical trial, the total volume injected ranged from 1.2 mL to 13.9 mL, with a median of 6.6 mL, to achieve optimal correction for all 3 subregions.⁴



BEFORE



AFTER 1 MONTH



Lorna was treated with:

JUVÉDERM
ULTRA PLUS XC 1.0 mL

JUVÉDERM
ULTRA XC 2.8 mL

Actual patient. Results may vary.

Unretouched photos of paid patient taken before treatment and 1 month after treatment. A total of 1.0 mL of JUVÉDERM[®] Ultra Plus XC was injected into the nasolabial folds. A total of 1.5 mL of JUVÉDERM[®] Ultra XC was injected into the nasolabial folds and oral commissures. A total of 1.3 mL of JUVÉDERM[®] Ultra XC was also injected into the lips (vermilion body, vermilion border, and philtral columns) for lip augmentation.



BEFORE



AFTER 1 MONTH



Model treated with JUVÉDERM VOLUMA® XC in the cheeks, JUVÉDERM® XC in the nasolabial folds, and JUVÉDERM® Ultra XC in the lips for lip augmentation. Results may vary.

There's a JUVÉDERM® for THAT

JUVÉDERM VOLUMA® XC is tailored with distinct gel properties to add **volume**, creating **lift** and **contour** in the cheek area.^{4,7,8,17}

JUVÉDERM VOLUMA® XC

Longest lasting in the midface^{4,19,†}

Corrects age-related volume loss in the midface for **up to 2 years**.^{4,‡}

LIFT IT CHEEKS

#1 chosen for the midface^{2,*}

*Market share of dermal filler brands in 2018.
†Versus other HA fillers with the same indication.
‡With optimal treatment.

IMPORTANT SAFETY INFORMATION (continued)

PRECAUTIONS

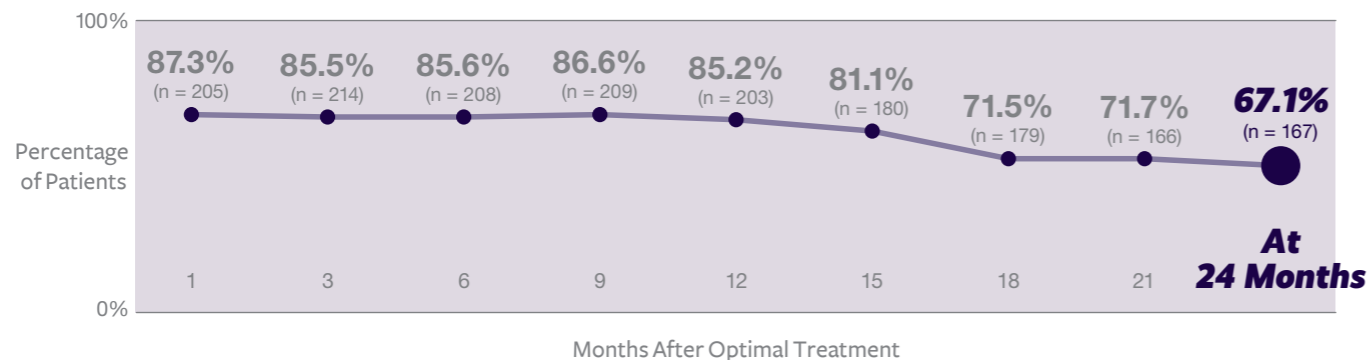
- In order to minimize the risk of potential complications, these products should only be used by healthcare professionals who have appropriate training, experience, and knowledge of facial anatomy
- Healthcare professionals are encouraged to discuss the potential risks of soft-tissue injections with their patients prior to treatment and ensure that patients are aware of signs and symptoms of potential complications
- The safety and effectiveness for the treatment of anatomic regions other than the mid-face with JUVÉDERM VOLUMA® XC; facial wrinkles and folds with JUVÉDERM® Ultra XC, JUVÉDERM® Ultra Plus XC, and JUVÉDERM VOLLURE™ XC; and the lips and perioral area with JUVÉDERM® Ultra XC and JUVÉDERM VOLBELLA® XC have not been established in controlled clinical studies

Please see additional Important Safety Information on following pages.

JUVÉDERM VOLUMA® XC

The **first** and **only** FDA-approved filler to correct age-related volume loss in the midface for **up to 2 years**.^{4,*}

Clinically Significant Results† Through 2 Years^{4,20,*}



Patients reported improved satisfaction and a more youthful appearance^{4,17,20}

AT 6 MONTHS | **90%** satisfied[†] & patients said they looked **5 years younger**[§]

AT 2 YEARS | **76%** satisfied[†] & patients said they looked **3 years younger**[§]

Repeat treatments required less product.

Approximately **70% less product** was required for repeat treatment in a clinical trial.⁴

*With optimal treatment.

†Defined as a ≥ 1-grade improvement from baseline in the *Mid-Face Volume Deficit Scale* (MFVDS).⁴

‡Overall score is obtained as an average score for responses on first 6 questions on Facial Appearance Evaluation. Improvement indicates an increase in the overall satisfaction score since baseline among treatment-group patients.²⁰

§Change in perceived age calculated by perceived age at follow-up visit less the perceived age at baseline as reported by treatment-group patients. A negative change indicated looking younger. A 10% reduction in age since baseline was considered clinically significant.²⁰

IMPORTANT SAFETY INFORMATION (continued)

PRECAUTIONS (continued)

- As with all transcutaneous procedures, dermal filler implantation carries a risk of infection. Follow standard precautions associated with injectable materials
- The safety for use during pregnancy, in breastfeeding females, and in patients with known susceptibility to keloid formation, hypertrophic scarring, and pigmentation disorders has not been studied
- The safety for use of JUVÉDERM VOLUMA® XC in patients under 35 or over 65 years, JUVÉDERM® Ultra XC and JUVÉDERM® Ultra Plus XC in patients under 18 years, and JUVÉDERM VOLLURE™ XC and JUVÉDERM VOLBELLA® XC in patients under 22 years has not been established
- Use with caution in patients on immunosuppressive therapy
- Patients who are using products that can prolong bleeding (such as aspirin, nonsteroidal anti-inflammatory drugs, and warfarin) may experience increased bruising or bleeding at treatment sites

Please see additional Important Safety Information on following pages.

Lift that lasts—up to 2 years^{4,*}



BEFORE

AFTER 1 MONTH

AT 2 YEARS

JUVÉDERM
VOLUMA® XC | **3.5 mL**

Actual patient. Results may vary.

Unretouched photos of paid patient taken before treatment, 1 month after treatment, and 2 years after treatment. A total of 3.5 mL of JUVÉDERM VOLUMA® XC was injected into the cheek area.

In the JUVÉDERM VOLUMA® XC clinical trial, the total volume injected ranged from 1.2 mL to 13.9 mL, with a median of 6.6 mL, to achieve optimal correction for all 3 subregions.⁴



BEFORE

AFTER 1 MONTH

JUVÉDERM
VOLUMA® XC | **4.0 mL**

Actual patient. Results may vary.

Unretouched photos of paid patient taken before treatment and 1 month after treatment. A total of 4.0 mL of JUVÉDERM VOLUMA® XC was injected into the cheek area.

In the JUVÉDERM VOLUMA® XC clinical trial, the total volume injected ranged from 1.2 mL to 13.9 mL, with a median of 6.6 mL, to achieve optimal correction for all 3 subregions.⁴

*With optimal treatment.

JUVÉDERM
VOLUMA® XC



Model treated with JUVÉDERM VOLUMA® XC in the cheeks, JUVÉDERM® XC in the nasolabial folds, and JUVÉDERM® Ultra XC in the lips for lip augmentation. Results may vary.

SMOOTH IT LINES

#1 chosen for lower-face wrinkles and folds^{2,*}

There's a JUVÉDERM® for THAT

Each product is designed with a unique combination of gel properties to meet individual patient needs—from **subtle** volume to **robust** volume.^{5,7-12}

JUVÉDERM VOLLURE™ XC

- A unique **balance** of gel firmness and cohesivity⁷
- **Longest lasting in the lower face**[†]—lasts up to **18 months**^{5,9,10,19,21-25,‡}

JUVÉDERM ULTRA PLUS XC

- A more highly cross-linked, **robust** gel to **fill** moderate to severe facial wrinkles and folds⁹
- **Lasts beyond 1 year**^{9,‡}

JUVÉDERM ULTRA XC

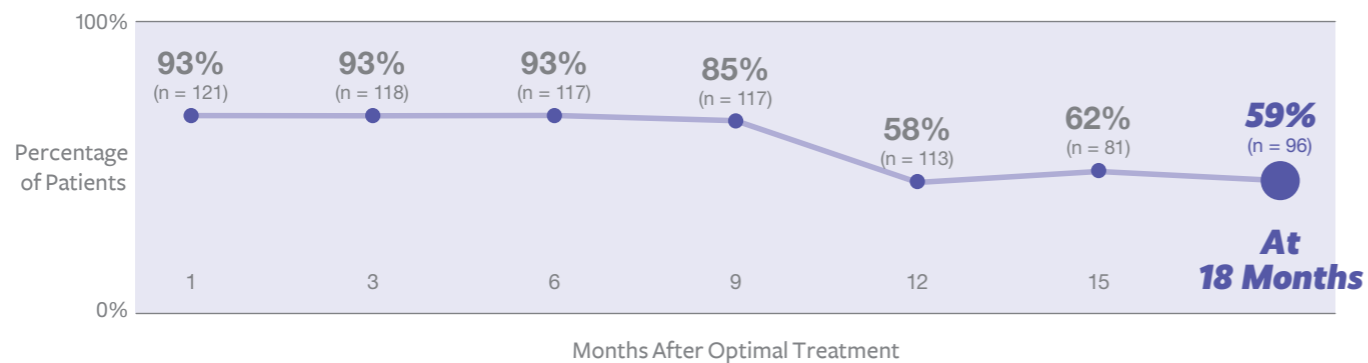
- A highly cross-linked gel to **correct** moderate to severe facial wrinkles and folds¹⁰
- **Lasts up to 1 year**^{10,13,‡}

*Market share of dermal filler brands in 2018.
†Versus other HA fillers with the same indication.
‡With optimal treatment.

JUVÉDERM VOLLURE™ XC

The **first** and **only** FDA-approved HA filler to correct moderate to severe facial wrinkles and folds for **up to 18 months**.^{5,*}

Clinically Significant Results† Through 18 Months^{5,26,*}



High patient satisfaction through 18 months^{5,26}

AT 6 MONTHS
82%
very satisfied[‡] (n = 117)

AT 18 MONTHS
68%
very satisfied[‡] (n = 59)

Repeat treatments required less product.

Approximately **65% less product** was required for repeat treatment in a clinical trial.⁵

*With optimal treatment.

†Defined as a ≥ 1-grade improvement from baseline on the NLF Severity Scale (NLFSS).⁵

‡Very satisfied was a score of 7 to 10 on a 0-to-10 scale.²⁶

IMPORTANT SAFETY INFORMATION (continued)

PRECAUTIONS (continued)

- If laser treatment, chemical peel, or any other procedure based on active dermal response is considered after treatment, or if these products are administered before the skin has healed completely, there is a possible risk of an inflammatory reaction at the treatment site
- Patients who experience skin injury near the site of implantation may be at a higher risk for adverse events
- The safety of JUVÉDERM VOLUMA® XC injectable gel for use in patients with very thin skin in the mid-face has not been established
- Patients may experience late onset nodules with use of dermal fillers, including JUVÉDERM VOLUMA® XC
- Patients may experience late onset adverse events with use of dermal fillers

Please see additional Important Safety Information on page 28.

Subtle volume for smooth results^{5,12}



JUVÉDERM
VOLLURE™ XC | 3.8 mL

Actual patient. Results may vary.

Unretouched photos of paid patient taken before treatment, 1 month after treatment, and 18 months after treatment. A total of 3.8 mL of JUVÉDERM VOLLURE™ XC was injected into the nasolabial folds, oral commissures, and marionette lines.



JUVÉDERM
VOLLURE™ XC | 2.3 mL

Actual patient. Results may vary.

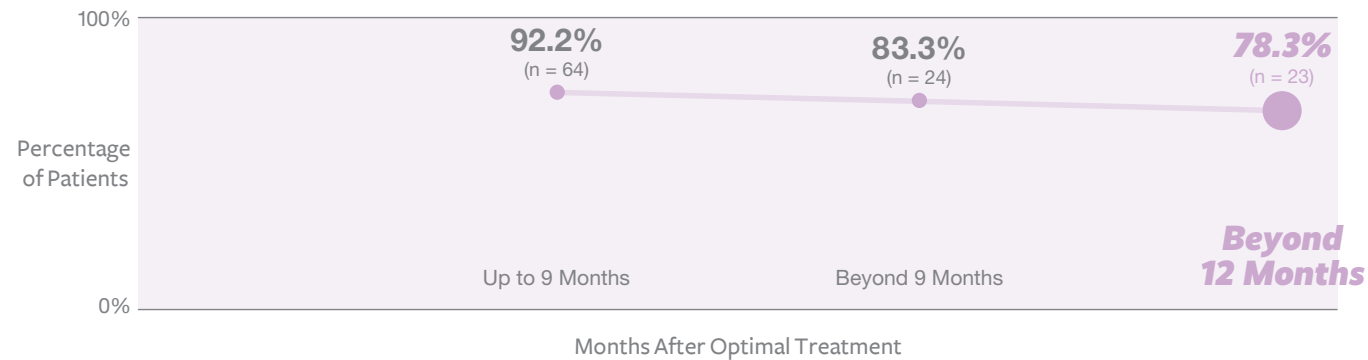
Unretouched photos of paid patient taken before treatment, 1 month after treatment, and 18 months after treatment. A total of 2.3 mL of JUVÉDERM VOLLURE™ XC was injected into the nasolabial folds, oral commissures, and marionette lines.

JUVÉDERM
VOLLURE™ XC

JUVÉDERM® ULTRA PLUS XC

JUVÉDERM® Ultra Plus XC is the **first** FDA-approved HA filler to fill moderate to severe facial wrinkles and folds **beyond 1 year**.^{9,*}

Clinically Significant Results† Beyond 1 Year^{9,*}



Creates a smoother appearance^{9,27}



BEFORE

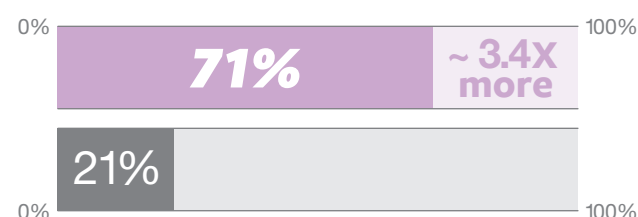
AFTER 2 MONTHS

JUVÉDERM®
ULTRA PLUS XC | 2.0 mL

Actual patient. Results may vary.

Unretouched photos of paid patient taken before treatment and 2 months after initial treatment. A total of 2.0 mL of JUVÉDERM® Ultra Plus XC was injected into the nasolabial folds and oral commissures.

Preferred by patients vs Perlane® (now Restylane® Lyft)^{28,29}



In a clinical study^{28,†},
~ 3.4X more patients preferred
JUVÉDERM® Ultra Plus XC
over Perlane® (71% vs 21%, respectively)
for the treatment of severe nasolabial folds.

*With optimal treatment.

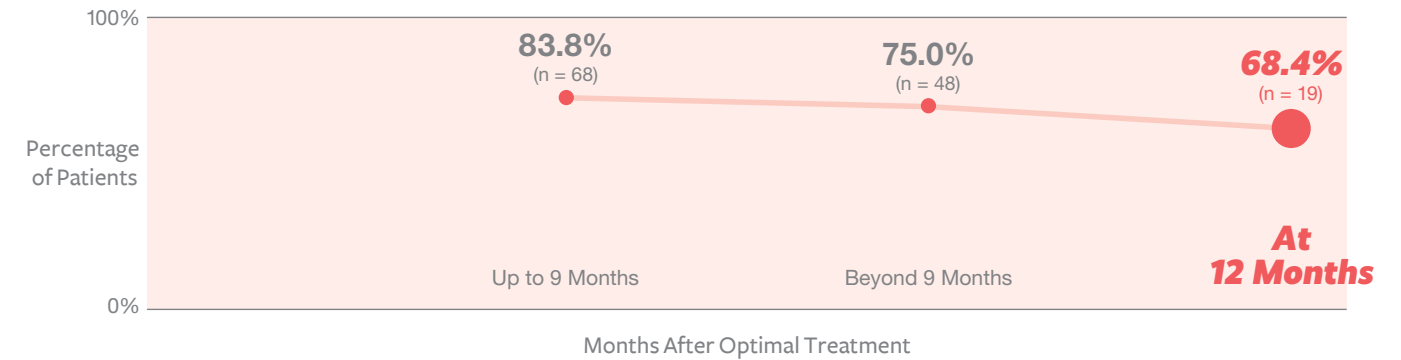
†Defined as a ≥ 1-grade improvement from baseline on the Wrinkle Assessment Scale (WAS).^{9,13}

‡A multicenter, prospective, randomized, controlled, single-blind, within-subject study (N = 80) sponsored by Allergan to compare the efficacy, safety, and longevity of a single treatment of JUVÉDERM® Ultra Plus XC vs Perlane® in the correction of severe nasolabial folds (NLFs) over 12 months.²⁸

JUVÉDERM® ULTRA XC

JUVÉDERM® Ultra XC is the **first** FDA-approved HA filler to correct moderate to severe facial wrinkles and folds for **up to 1 year**.^{10,13,*}

Clinically Significant Results† Through 1 Year^{10,13,*}



Softens the appearance of wrinkles and folds¹⁰



BEFORE

AFTER 1 MONTH

AT 1 YEAR

JUVÉDERM®
ULTRA XC | 3.0 mL

Actual patient. Results may vary.

Unretouched photos of paid patient who received a 3-syringe treatment with JUVÉDERM® Ultra XC for the nasolabial folds and marionette lines. One syringe = 1.0 mL of JUVÉDERM® Ultra XC.

Repeat treatments required less product.

Approximately **55% less product** was required for repeat treatment in clinical trials.^{9,10}

*With optimal treatment.

JUVÉDERM®
XC



Model treated with JUVÉDERM VOLUMA® XC in the cheeks, JUVÉDERM® XC in the nasolabial folds, and JUVÉDERM® Ultra XC in the lips for lip augmentation. Results may vary.

PLUMP IT LIPS

#1 chosen for lip treatments^{2,*}

There's a JUVÉDERM® for THAT

JUVÉDERM® gives you a true range of products in the lip area to meet different patient needs—from **subtle volume** to **plump, natural-looking lips**.^{6,10}

Longest lasting in the lips^{6,10,22,30,†}

The **first** and **only** FDA-approved fillers to increase lip fullness for **up to 1 year**.^{6,10,‡}

JUVÉDERM VOLBELLA® XC

- Adds **subtle volume** to the lips⁶
- **Longest lasting in the perioral lines**[†]—softens the appearance of perioral lines for **up to 1 year**^{6,30,‡}

JUVÉDERM ULTRA XC

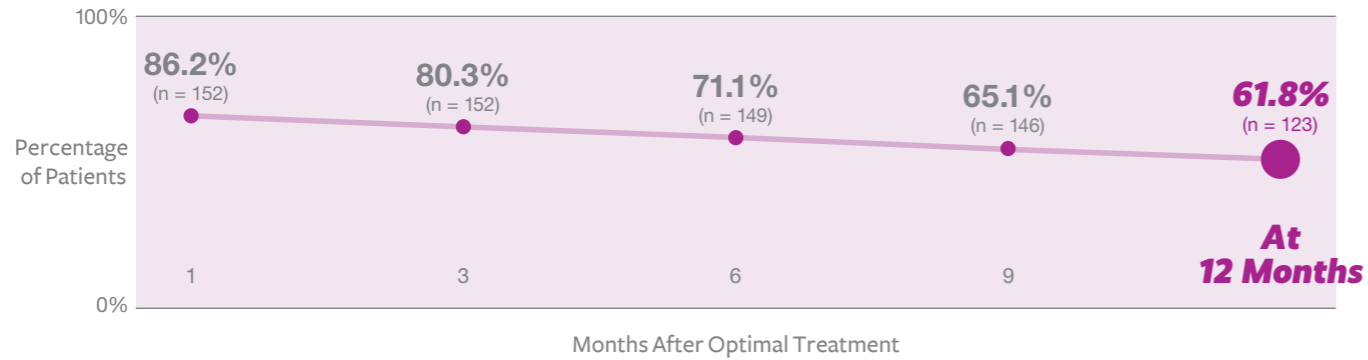
- Adds volume for **plump, natural-looking lips**¹⁰

*Market share of dermal filler brands in 2018.
†Versus other HA fillers with the same indication.
‡With optimal treatment.

JUVÉDERM VOLBELLA® XC

The **first** and **only** FDA-approved filler proven to increase lip fullness **and** correct perioral lines for **up to 1 year**.^{6,*}

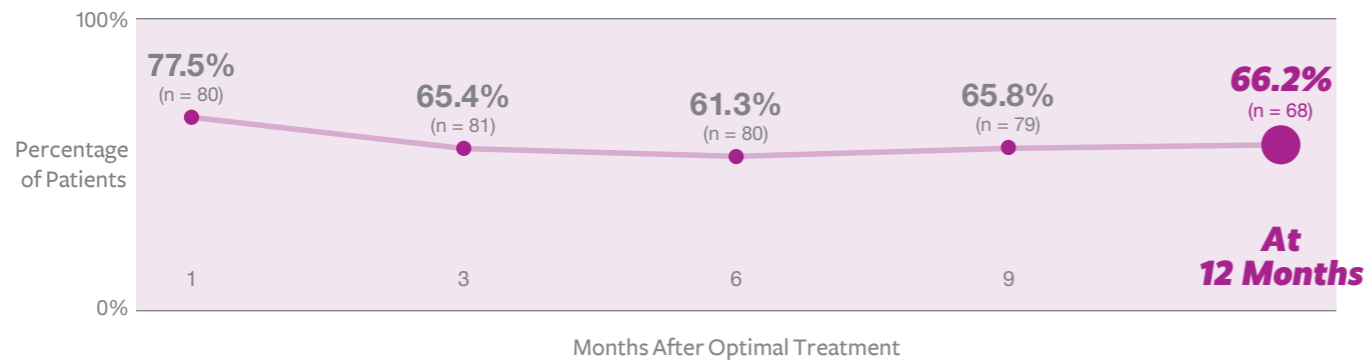
LIPS: Clinically Significant Results[†] Through 1 Year^{6,*}



Improved patient satisfaction with lips through 1 year^{6,‡}

AT 3 MONTHS **96%** (n = 153)
AT 1 YEAR **80%** (n = 123)

PERIORAL LINES: Clinically Significant Results[§] Through 1 Year^{6,31,*}



Improved patient satisfaction with lip lines through 1 year^{6,32,‡}

AT 3 MONTHS **88%** (n = 153)
AT 1 YEAR **75%** (n = 123)

*With optimal treatment.

[†]Defined as a ≥ 1-grade improvement from baseline on the Allergan Lip Fullness Scale (LFS).⁶

[‡]Patients reported improvement in satisfaction with their lips based on the *Satisfaction With Lips* module of the FACE-Q questionnaire. They reported improvement in satisfaction with their lip lines based on the *Satisfaction With Lip Lines* module of the FACE-Q questionnaire. At each study visit, responses on each module generated a score ranging from 0 to 100. Improvement was defined as a higher score versus baseline.^{6,31}

[§]Defined as a ≥ 1-grade improvement from baseline on the Perioral Lines Severity Scale (POLSS).^{6,31}

Add subtle volume to the lips⁶



JUVÉDERM VOLBELLA® XC | 1.2 mL

Actual patient. Results may vary.

Unretouched photos of paid patient taken before treatment, 1 month after treatment, and 1 year after treatment. A total of 1.2 mL of JUVÉDERM VOLBELLA® XC was injected into the lips (vermilion body and philtral columns) for lip augmentation.

Soften the appearance of perioral lines⁶



JUVÉDERM VOLBELLA® XC | 2.1 mL

Actual patient. Results may vary.

Unretouched photos of paid patient taken before treatment and 1 month after treatment. A total of 2.1 mL of JUVÉDERM VOLBELLA® XC was injected into the oral commissures and lips (vermilion body, vermilion border, Cupid's bow, and philtral columns) for lip augmentation, and into the perioral lines.

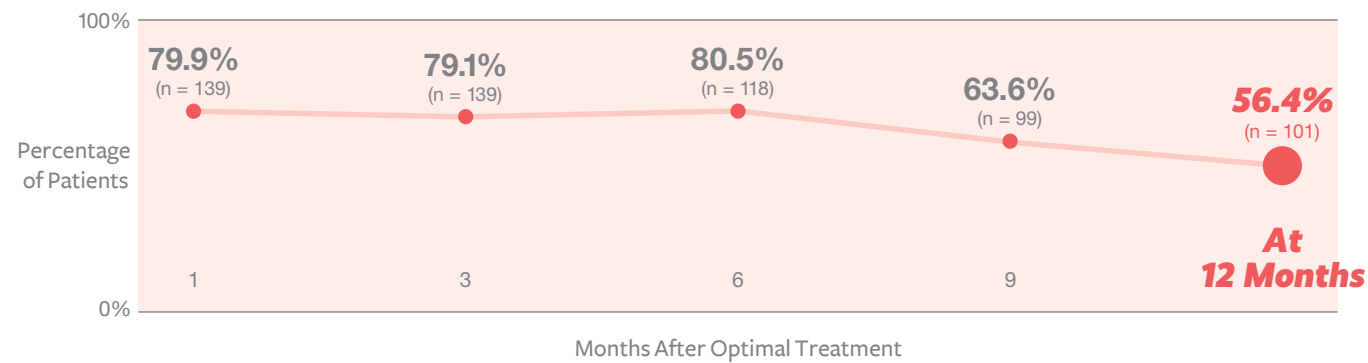
Repeat treatments required less product.
Approximately **40% less product** was required for repeat treatment in a clinical trial.⁶

JUVÉDERM VOLBELLA® XC

JUVÉDERM® ULTRA XC

The **first** and **only** FDA-approved filler to increase lip fullness **and** correct moderate to severe facial wrinkles and folds for **up to 1 year**.^{10,13,*}

LIPS: Clinically Significant Results† Through 1 Year^{10,*}



Improved patient satisfaction through 1 year^{10,‡}

AT 3 MONTHS

92%
(n = 139)

AT 1 YEAR

78%
(n = 74)

Repeat treatments required less product.

Approximately **30% less product** was required for repeat treatment in a clinical trial.¹⁰

*With optimal treatment.

†Defined as a ≥ 1-grade improvement from baseline on the Allergan Lip Fullness Scale (LFS).¹⁰

‡Versus baseline. Patients rated their satisfaction on an 11-point scale, where 0 = very dissatisfied and 10 = very satisfied.³³

IMPORTANT SAFETY INFORMATION (continued)

ADVERSE EVENTS

The most commonly reported side effects for JUVÉDERM® injectable gels were injection-site redness, swelling, pain, tenderness, firmness, lumps/bumps, bruising, discoloration, and itching. For JUVÉDERM VOLBELLA® XC, dryness was also reported. For JUVÉDERM VOLUMA® XC, side effects were predominantly moderate in severity, with duration of 2 to 4 weeks; for JUVÉDERM® Ultra XC, JUVÉDERM® Ultra Plus XC, or JUVÉDERM VOLLURE™ XC, they were mostly mild or moderate in severity, with duration of 14 days or less; and for JUVÉDERM VOLBELLA® XC, they were predominantly mild or moderate, with duration of 30 days or less.

To report an adverse reaction with any product in the JUVÉDERM® Collection, please call Allergan at 1-800-433-8871. Please visit JuvedermDFU.com for more information.

Products in the JUVÉDERM® Collection are available by prescription only.

Plump, natural-looking lips—up to 1 year^{10,*}

At 1 year, the majority of patients reported improvement in their lips and mouth¹⁰:

Softness • Smoothness • Natural look and feel



Actual patient. Results may vary.

Unretouched photos of paid patient taken before treatment, 1 month after treatment, and 1 year after treatment. A total of 1.2 mL of JUVÉDERM® Ultra XC was injected into the oral commissures and lips (vermilion body and vermilion border) for lip augmentation.



Actual patient. Results may vary.

Unretouched photos of paid patient taken before treatment and 1 month after treatment. A total of 1.6 mL of JUVÉDERM® Ultra XC was injected into the lips (vermilion body and philtral columns) for lip augmentation.

*With optimal treatment.

JUVÉDERM®
ULTRA XC

YOUR NEEDS INSPIRE OUR PURPOSE

Practice partnership

PRACTICE LOYALTY AND TIERED SAVINGS



Training and education

ONLINE AND HANDS-ON INJECTOR TRAINING



MEDICAL SCIENTIFIC LIAISONS (MSLs)

Answer medical/scientific questions about the JUVÉDERM® formulations

Patient savings and education

PATIENT LOYALTY PROGRAM



DOWNLOADABLE PATIENT EDUCATION RESOURCES



Consumer interest

JUVÉDERM® is the leader in generating patient awareness for a dermal filler brand³⁵

Since 2013, JUVÉDERM® has invested nearly **10X as much in direct-to-consumer (DTC)** advertising versus the leading competitor.^{35,*}



**YOUR
PRACTICE.
OUR
PURPOSE.**

**Our goal is to consistently provide you with innovative products
and exceptional service—all with a personal touch.**

*Based on a comparison of DTC advertisement spending from 2013 to 2017 for JUVÉDERM® and Restylane®, Restylane Lyft®, and Restylane® Silk. Other dermal filler brands evaluated include Bellafill®, Radiesse®, and Sculptra Aesthetic®; there was no reported media spend for Belotero Balance® or Revanesse® Versa™.³⁵

LIFT JUVÉDERM VOLUMA [®] XC	BALANCED JUVÉDERM VOLLURE [™] XC	FILL JUVÉDERM [®] ULTRA PLUS XC	SOFT JUVÉDERM VOLBELLA [®] XC	PLUMP JUVÉDERM [®] ULTRA XC
VOLUMIZE CHEEKS	FILL MODERATE TO SEVERE LINES		ADD FULLNESS TO LIPS	



SPECIFIC DESIGN⁴⁻¹¹

NATURAL LOOKING^{10,13,18,20}

LONG LASTING^{4-6,9,10,13}

Actual patient treated with JUVÉDERM VOLUMA[®] XC in the cheek area, JUVÉDERM VOLLURE[™] XC in the nasolabial folds and marionette lines, and JUVÉDERM VOLBELLA[®] XC in the lips for lip augmentation. Results may vary.

JUVÉDERM[®]

COLLECTION OF FILLERS

CHEEKS • LINES • LIPS

There's a JUVÉDERM[®] for THAT

Please see Indications and Important Safety Information throughout this guide.

References:

1. Data on file, Allergan, October 2018; Dermal Filler Monthly Tracker Report. 2. Data on file, Allergan, 2018; Facial Injectables Patient Records Tracking Study: Fillers. 3. Bernardin A, Pierre S, Pather S, Roca-Martinez A, Fugazza C, Lebreton P. VYCROSS[®]: An innovative dermal filler technology. Poster presented at: 1st Annual Anti-Aging Medicine European Congress (AMEC); October 11-12, 2013; Paris, France. 4. JUVÉDERM VOLUMA[®] XC Directions for Use, September 2016. 5. JUVÉDERM VOLLURE[™] XC Directions for Use, March 2017. 6. JUVÉDERM VOLBELLA[®] XC Directions for Use, July 2017. 7. Pierre S, Liew S, Bernardin A. Basics of dermal filler rheology. *Dermatol Surg.* 2015;41(suppl 1):120S-126S. 8. Hee CK, Shumate GT, Narurkar V, Bernardin A, Messina DJ. Rheological properties and in vivo performance characteristics of soft tissue fillers. *Dermatol Surg.* 2015;41(suppl 1):373S-381S. 9. JUVÉDERM[®] Ultra Plus XC Directions for Use, May 2016. 10. JUVÉDERM[®] Ultra XC Directions for Use, May 2016. 11. Data on file, Allergan, January 18, 2013; Swelling test. 12. JUVÉDERM VOLLURE[™] XC Patient Label, March 2017. 13. Pinsky MA, Thomas JA, Murphy DK, Walker PS; for JUVÉDERM[®] vs ZYPLAST[®] Nasolabial Fold Study Group. JUVÉDERM[®] injectable gel: A multicenter, double-blind, randomized study of safety and effectiveness. *Aesthetic Surg J.* 2008;28(1):17-23. 14. Tezel A, Fredrickson GH. The science of hyaluronic acid dermal fillers. *J Cosmet Laser Ther.* 2008;10(1):35-42. 15. Data on file, Allergan, January 28, 2013; RE1301025 Report: Comparison of swelling potential of VYCROSS[®] range, HYLACROSS[™] range and QMED range. 16. Borrell M, Leslie DB, Tezel A. Lift capabilities of hyaluronic acid fillers. *J Cosmet Laser Ther.* 2011;13(1):21-27. 17. JUVÉDERM VOLUMA[®] XC Patient Label, May 2016. 18. JUVÉDERM VOLBELLA[®] XC Patient Label, May 2016. 19. Restylane[®] Lyft With Lidocaine Instructions for Use, April 2016. 20. Data on file, Allergan, August 31, 2012; Interim 24-Month Study Report: JUVÉDERM VOLUMA[™] XC-002. 21. Belotero Balance[®] Instructions for Use, January 2016. 22. Restylane[®] Instructions for Use, April 2016. 23. Restylane[®] Refyne Instructions for Use, December 2016. 24. Restylane[®] Defyne Instructions for Use, December 2016. 25. Revanesse[®] Versa[™] Directions for Use, August 8, 2017. 26. Data on file, Allergan, October 26, 2015; CSR JUVÉDERM VOLLURE[™] XC S17L-001 Final Report. 27. JUVÉDERM[®] Ultra Plus XC Patient Label, May 2016. 28. Goodman GJ, Bekhor P, Rich M, Rosen RH, Halstead MB, Rogers JD. A comparison of the efficacy, safety, and longevity of two different hyaluronic acid dermal fillers in the treatment of severe nasolabial folds: a multicenter, prospective, randomized, controlled, single-blind, within-subject study. *Clin Cosmet Investig Dermatol.* 2011;4:197-205. 29. Galderma receives FDA approval to market Restylane[®] Lyft with Lidocaine to correct age related volume loss in the cheek area [press release]. Fort Worth, TX: Galderma Corporate & Digital Communications; July 2, 2015. http://www.galdermausa.com/downloads/MP-RES-00035_FDA%20ApprovalPressRelease_FINAL.pdf. Accessed December 8, 2018. 30. Restylane[®] Silk Instructions for Use, April 2016. 31. Data on file, Allergan, May 29, 2015; CSR JUVÉDERM VOLBELLA[®] XC-004 Final Report. 32. Data on file, Allergan, July 7, 2016; Perioral Lines Satisfaction at 3 Months. 33. Data on file, Allergan, June 19, 2014; CSR JULIDO-002 Interim 6-Month Report: JUVÉDERM[®] Ultra XC Injectable Gel. 34. Data on file, Allergan, May 1, 2018; Brilliant Distinctions[®] Weekly Reporting Dashboard (2018 YTD). 35. Data on file, Allergan; Kantar reported competitive spend: 2013-2017.